



CONTENTS

01	Bath and Bed Linen6
02	Security14
03	Janitorial and Housekeeping15
04	Room Accessories18
05	Bath Hardware27
06	Children's products29
07	Eco Products33
08	PPE Products48

guestsupply[®]
a Sysco company



we know hotels

INSIDE AND OUT

With over 40 years of experience, Guest Supply® is an industry leader in full-spectrum hotel solutions. Our unique combination of capabilities, including product design and development, manufacturing, distribution and service and support, positions Guest Supply as the only provider a property will ever need.

Guest Supply is distinguished for being the largest manufacturer devoted to the hospitality industry. Our manufacturing control ensures the production of the highest quality of products. For our customers, this level of quality results in more operational efficiencies, plus better performing and longer-lasting items. For guests, it creates a more comfortable experience - one capable of making a hotel their preferred destination.

Our customers can look to us to meet their growing and evolving needs, as we continually expand the level of service we offer.

While properties around the globe benefit from our greater product selection, a more efficient ordering process, and our improved operations, we can simultaneously help our customers maintain guest satisfaction and brand loyalty, ensuring business success.

PRODUCT DEVELOPMENT | MANUFACTURING | DISTRIBUTION | SERVICE & SUPPORT

This brochure shows a selection of the products we offer; if you cannot find what you are looking for, please do not hesitate to contact us and our team will be happy to help!



we know how to open hotels

INSIDE AND OUT

Our 360 support approach to opening your property provides you with efficiencies and piece of mind from 12 months out to Opening Day.

Consulting: A specialist Team to work with you to conduct a thorough analysis of your hotel offerings and needs.

Mock Up Room: Delivering high-quality samples for your Team's review and Mock Up Room in quick time.

Production: Manufacturing products within budget, on schedule with world best quality standards and strict QC measures.

CSR: Each partner is rigorously audited at each stage of production to ensure compliance with standards.

Account Manager: A dedicated AM assigned to you for every step of the way including delivery co-ordination.

Warehousing: Leading Regional warehousing and logistics expertise ensuring inventory

we know design & customization

INSIDE AND OUT

Sometimes you just want to follow your own creative instincts and want something that is more bespoke and a little bit different or specific.

We translate the designs into information that insure mass production will meet the intention of the design.

Whatever your needs are, talk to our Team and let us help you to create a customized products just for you.



PRODUCT DEVELOPMENT | MANUFACTURING | DISTRIBUTION | SERVICE & SUPPORT

where we are in Asia





our sustainability story

CORPORATE SOCIAL RESPONSIBILITY

THE PEOPLE

At Guest Supply, we make it our mission to give back, not only to our customers, but to our employees, who work hard each day to provide a full service solution of excellence.

Guest Supply offers a secure and healthy environment for its employees; supporting personal development and volunteer opportunities.

As a global company, we work with people from a variety of backgrounds; our goal to be a diverse and inclusive organisation is essential to building a strong future for our company.

THE PLANET

SO, WHAT ARE WE DOING TO HELP THE ENVIRONMENT?

- Reduce the carbon footprint of our fleet and operations
- Use recycled and recycle shipping cartons and packaging
- Use recycled polyester
- Reduce landfill and demand for petroleum based products and recycle 7,000 tons of plastic - equates to 318 million plastic bottles.
- Design amenity tubes made from post-consumer resins
- Incorporate FSC certified materials in our products

ENVIRONMENTAL INITIATIVES

HELPING OUR CUSTOMERS STAY GREEN

Guest Supply firmly believes that meeting the needs of our customers shouldn't compromise our commitment to conservation. In fact, minimising our impact on the environment is a priority in all aspects of our business. From the raw materials, processes and practices utilised in the making of our products, to the selection of manufacturers and suppliers with whom we partner, we make decisions with the environment in mind.

Conservation initiatives at both our manufacturing and distribution facilities include the reduction of water, electricity, and natural gas consumption. Our processes are also designed to recycle and reutilise raw materials and to ensure that there are no harmful emissions into the air, ground, or water. We are equally focused on developing, engineering, and supplying products that reduce our customers' energy needs, consumption, and even costs.

CLEAN THE WORLD



PHILANTHROPIC PROGRAMS

TO BETTER THE WORLD, WE PARTNER WITH CLEAN THE WORLD™

MISSION

- Collect and recycle soap and shampoo products discarded by the hospitality industry everyday
- Through the distribution of these and other donated hygiene products to impoverished people, prevent the millions of deaths every year caused by hygiene related illnesses

At Guest Supply, we consider the full life cycle of our products in our day-to-day operations – including their disposal. Working along with our customers, we partner with Clean the World, a global enterprise dedicated to reducing infection and disease in impoverished countries.

WHY SUPPORT CLEAN THE WORLD?

- Saving Lives - significantly reduce the spread of illness due to a lack of proper hygiene
- Saving the Planet – significantly reduces waste, minimise negative environmental impact and promote a sustainable future
- Corporate Social Responsibility – supports domestic homeless shelters

More than 30 million bars of soap have been distributed in more than 100 countries by Clean the World. Through our efforts, and those of our participating lodging partners, we are positively affecting the health and well-being of countless individuals around the globe.

BATH &
BED LINEN

01

Comfortable and high quality bedding for a good night's sleep



Flat Sheet Full/Double XL

- 100% cotton, T300, ring spun.
- 60sx40s, 173x120, 140 gsm, sateen weave.
- Mercerized, plain white.
- OEKO-Tex 100 certified
- Hem: Top 3", Bottom 1".

• Size: 220 x 300cm
Product code: HT.BL.ST001



Flat Sheet King

- T200+, 100% cotton
- Plain White
- Hem: Top 3" Bottom 1". 300 x 300cm

• Size: 210 x 240cm
Product code: HT.BL.ST000



Basic Mattress Protector FULL/DOUBLE XL/KING

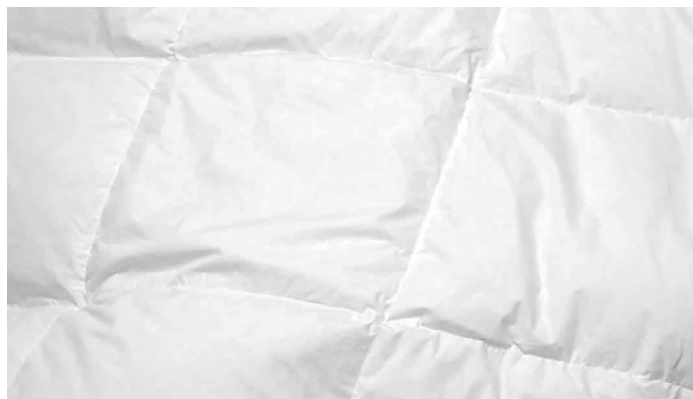
- Surface knitted fabric.
- 100% polyester.
- Color: White
- Oeko-Tex Standard 100

• FULL/DOUBLE XL Size: 120x200x30cm
Product code: HT.BL.TP014
• King Size: 180x200x40 cm
Product code: HT.BL.TP013



Duvet Insert Full/Double XL

- White barrier weave, T233, 100% cotton shell.
 - 15" (38cm) sewn through box quilt design in white.
 - Double needle sewn edges with loops at each corner, filled with grey duck down 75% cluster.
 - Fill weight: 200gsm
 - Size: 200 x 230cm
- Product code: HT.BL.CDDDI002



Duvet Insert KING

- White barrier weave, T233, 100% cotton shell.
 - 15" (38cm) sewn through box quilt design in white.
 - Double needle sewn edges with loops at each corner, filled with grey duck down 75% cluster.
 - Fill weight: 200gsm.
 - Size: 260 x 230cm
- Product code: HT.BL.CDDC002



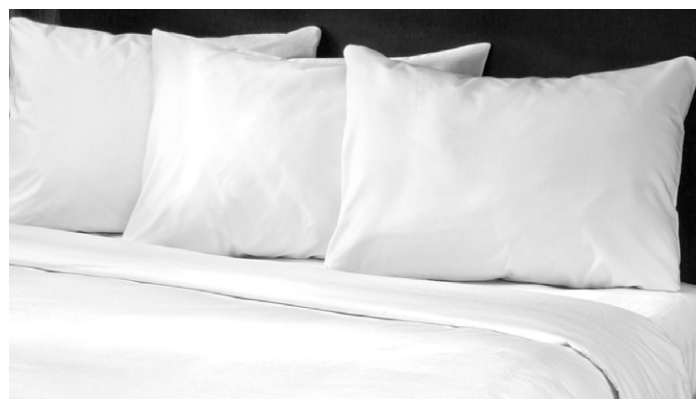
Duvet Cover Full/Double XL

- T200+, 100% cotton, white.
 - 3 sides double stitched with knife edge, bottom opening, one side on opening.
 - 6" flap with 2" hem, other side: no flap with 1" hem, 8" hand holds on left and right sides, 1.5" from top, with care label.
 - Size: 210 x 240cm
- Product code: HT.BL.DC005



Duvet Cover King

- T200+, 100% cotton, white.
 - 3 sides double stitched with knife edge, bottom opening, one side on opening.
 - 6" flap with 2" hem, other side: no flap with 1" hem, 8" hand holds on left and right sides, 1.5" from top, with care label.
 - Size: 270 x 240cm
- Product code: HT.BL.DC004



Bath Towel

- 100% cotton, ring spun pile yarn.
 - Dobby border design on both ends.
 - Boarder size 2cm, 4 sides hemmed, white.
 - OEKO-Tex 100 certified.
 - Size: 75cm x 150cm, 600gsm, 675 g/pc
- Product code: HT.BT



Hand Towel

- 100% cotton, ring spun pile yarn.
 - Dobby border design on both ends.
 - Boarder size 2cm, 4 sides hemmed, white.
 - OEKO-Tex 100 certified.
 - Size: 40cm x 75cm, 550gsm, 165 g/pc.
- Product code: HT.HT

Wash Cloth

- 100% cotton, ring spun pile yarn.
 - Dobby border design on both ends.
 - Boarder size 1.5 cm, 4 sides hemmed, white.
 - OEKO-Tex 100 certified.
 - Size: 30cm x 30cm, 550gsm, 50 g/pc
- Product code: HT.WC



Bath Mat

- Ring border design
 - 700gsm, 100% cotton
 - Color: White
 - OEKO-Tex 100 certified.
 - Size: 50cm x 80cm
- Product code: HT.BM

Down Pillows King

- Fabric:100% cotton shell, T233, ring spun.
 - 40sx40s, 133x100, 130 gsm, white barrier weave.
 - OEKO-Tex 100 certified.
 - Fabrication: Pillow in pillow construction, double stitch with color cording.
 - Filling: Outer filled with grey duck down 75% cluster, centre filled with grey duck feathers 4-6cm.
 - Fill Weight: 33.5oz (4.5ozGDD + 29ozGDF)(950g.)
- Size: 51 x 71cm
Product code: HT.BL.CDPL007



AllerZip Pillow Protector

- Surface knitted fabric.
- 100% polyester.
- Color: White
- Oeko-Tex Standard 100

- Size: 50 x 75cm
Product code: HT.BL.CDPP004



Synthentic Pillows

- Fabric: 50% cotton 50% polyester, T180
 - Ring spun, 40sx40s, 110x70, 105 gsm, plain weave, white,OEKO-Tex 100 certified.
 - Fabrication: Double stitch with cording.
 - Filled with recycled cluster polyester.
 - Filling Spec: 100% recycled, cluster polyester.
 - Fill Weight: 31.8oz (900g)
- Size: 51 x 71cm
Product code: HT.BL.CDPL008



Pillow Case

- 100% cotton, T300
- Ring spun, 60sx40s, 173x120
- 140 gsm, sateen weave, mercerized, plain white.
- OEKO-Tex 100 certified.
- Envelope enclosure with 6" flap

- Size: 55 X 76cm
Product code: QT.RT.PC002

Bathrobe

- Model No.: SCK1252c-P
- Boca Terry - SCK1252c-P, white & navy piping add logo embroidery
 - Color: white & navy piping
- Available in:
C.B. length X bust X sleeve length
52 X 60 X 52cm
Product code: QT.BR001



Standard Slipper

- Polyester rag cloth
 - Length 30cm, 5mm water ripple sole, sealed at the front,
 - Not washable, with white paper bandage.
 - Color: white
- Available in:
Large Slipper (30cm)
Product code: GS03.TEMP.1



Children’s Slipper

- Cutting velvet fabric
 - 5mm water ripple sole, sealed at the front
 - Not washable
 - Color: white
- Available in:
Size: 16cm
Size: 20cm
Product code: GS03.TEMP.2





ECRU
MSI 152c-PE
off-white lining

Microfiber

No spa or pool outing is complete without the casual but elegant microfiber bathrobe, featuring plush Microterry lining and roll-up collar and cuffs. The new standard for high-end hotels and resorts worldwide.

Microfiber Shawl w/210gsm Lining, Shell: 85% Poly, 15% Nylon, Plush Lining: 100% Poly

* Available in White or ECRU color



ECRU
MSI 152c-PE
off-white lining

WHITEMS
1152c-P
white lining

Velour

Boca Terry's 100% cotton, incredibly cozy Velour Bathrobes have a distinguishable luster, undeniable warmth, and a signature soft texture. Often mistaken for velvet, velour is a more durable, woven fabric that is as classic as it is comfortable.

12oz, Shawl Collar Bathrobe, 100% combed cotton

* Available in White or ECRU color



Satin

Start your morning and end your day in this silky, remarkably airy, undeniably feminine Satin Kimono Bathrobe — the perfect excuse to feel pampered, playful and sexy in your hotel suite or home.

100% Polyester, 36" Length, 17" Sleeve Length

* Available in White color



Large Diamond Weave Kimono

Boca Terry's 100% cotton, incredibly cozy Velour Bathrobes have a distinguishable luster, undeniable warmth, and a signature soft texture. Often mistaken for velvet, velour is a more durable, woven fabric that is as classic as it is comfortable.

12oz, Shawl Collar Bathrobe, 100% combed cotton

* Available in White or ECRU color



House Keeper

- Jacket
- Pants
- Shirt
- 87% polyester,9%Rayon,4% spandex
- Size: S、 M、 L、 XL、 2XL、 3XL、 4XL、 5XL

Product Code: GS01.3.1.00011 -GS01.3.1.00014



Engineering uniform

- Jacket
- Pants
- Shirt
- 35% cotton 65% polyester
- Size: S、 M、 L、 XL、 2XL、 3XL、 4XL、 5XL

Product Code: GS01.3.1.00007 -GS01.3.1.00010

Chef uniform

- Apron
- Trousers
- Coat
- 35% cotton 65% polyester
- Color: white/Black
- Size: S、 M、 L、 XL、 2XL、 3XL、 4XL、 5XL

Product Code: GS01.3.1.00002 -GS01.3.1.00006





Room Safe

- Brand: Kingsafe
- Black colour
- LED screen
- 4-6 digit PIN setting, with last 100 entry records
- two sets emergency system
- CEU and spare keys
- 1 year warranty, lifetime support
- Dimensions: 420*200*H365mm
- CCC certification

Product code: GS03.TEMP.3






JANITORIAL &
HOUSEKEEPING

03

Bellman truck

Model No.: XL-2G



Color option
 Black  Red  Gray

- Brand: South
- Material: 304 mirror finish or brushed stainless steel, rose gold color with 8" silent wheel and black plush carpet.
- Color: red
- Warranty: 1 Year



Size: 900X650X850mm

Product code: GS01.1.2.00001

Luggage trolley

Model No.: XL-9



Color option
 Black  Red

- Brand: South
- Material: 304 mirror finish or brushed stainless steel with 8" silent wheel and black plush carpet.
- Color: Stainless steel color and black carpet
- Warranty: 1 Year

Size: 1100X650X1960mm

Product code: GS01.1.2.00002

Cloth trolley

Model No.: C-40



- Brand: South
- Material: 304 mirror finish or brushed stainless steel
- Blue Oxford cloth bag
- Color: blue
- Warranty: 1 Year

Size: 900X650X850mm

Product code: GS01.1.2.00005

Clean linen truck

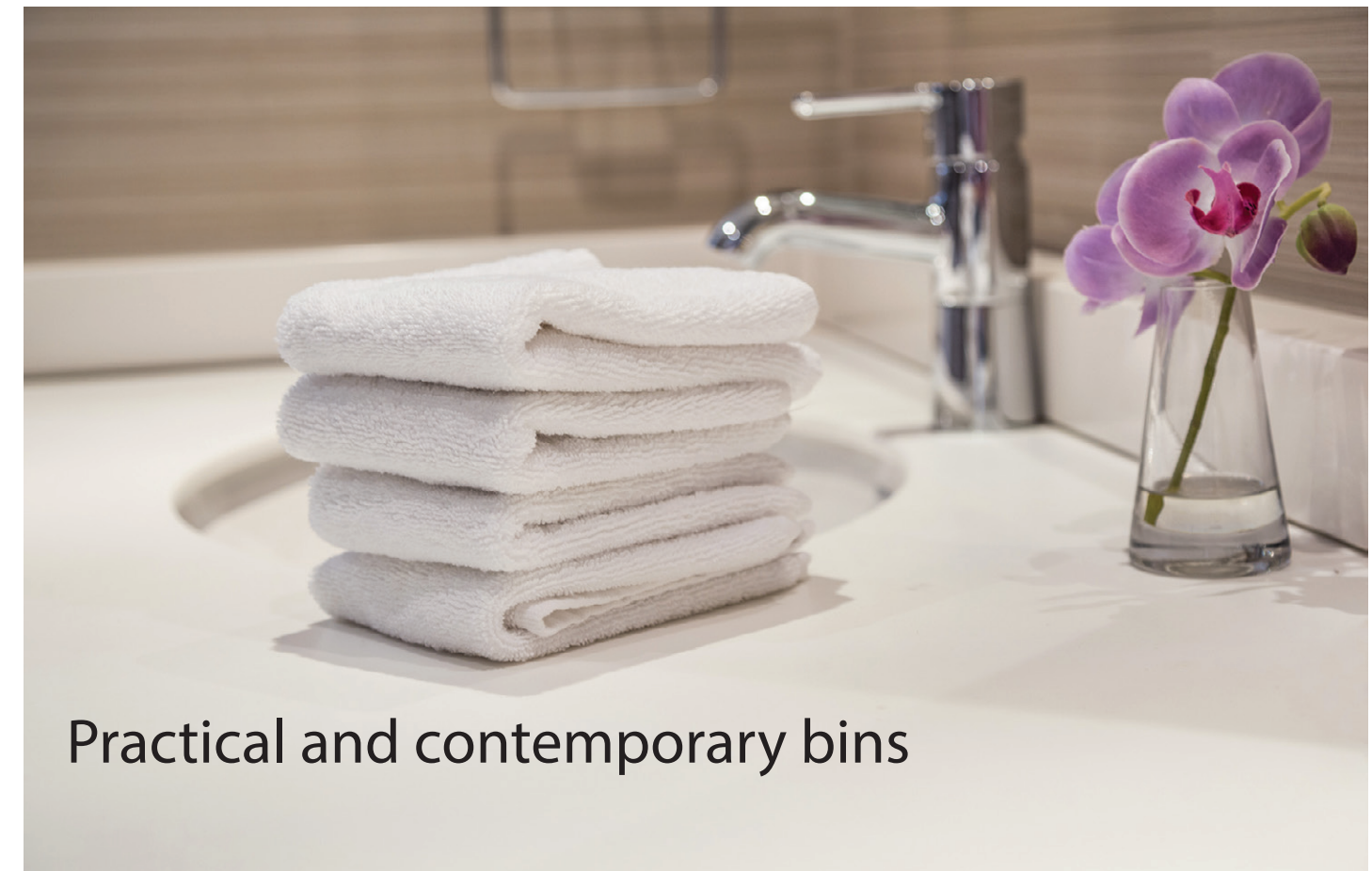
Model No.: 99.3335D-1



- Brand: Zhongzhan
- Material: box frame, with aluminium mesh.
- Three internal laminates, iron chassis with anti-collision glue.
- Bottom mounted with 6-inch movable wheel.
- Color: silvery white
- Warranty: 1 Year

Size: 1138 X 600 X 1740mm

Product code: GS03.TEMP.4



Practical and contemporary bins



Rubbish bin (Recycle)

- Tailor made
- Strong structure, anti-corrosion.
- Wear-resistant and has a good heat, alkali.
- Antifreeze and acid
- Easy to clean
- Color: type B brown
- Material: PU leather
- Size: 310X220X337mm

Available in: 12L
Product code: GS03.TEMP.6

Color option
Type A Type B

Rubbish bin

- Tailor made
- Stainless steel liner, with good corrosion resistance
- Durable products
- Simple structure
- Color: type A light color
- Material: PU leather
- Size: 160x220x307 mm

Available in: 10L

Product code: GS03.TEMP.7



Color option
Type A Type B

Minibar

Model No.: XT-30A

- Volume: 30L
- Refrigeration temperature (°C): 5-15
- Power consumption (kW. H / 24h): 0.50
- Number of shelves:
- Rubberised feet
- Color: black
- Warranty: 3 Year
- CCC certification
- Size: W * D * H (mm): 400*485*400

Available in: 30 L

Product code: GS03.TEMP.5



Rubbish bin

- Tailor made
- Double layer round
- Stainless steel liner, with good corrosion resistance.
- Durable products
- Simple structure
- Color: type B brown
- Material: PU leather
- Size: φ225x270mm

Available in: 8L

Product code: GS03.TEMP.8

Color option
Type A Type B



Rubbish bin

- Tailor made
- Double layer round
- Stainless steel liner, with good corrosion resistance.
- Durable products
- Simple structure
- Color: type A light color
- Material: PU leather
- Size: φ225x270mm

Available in: 8L

Product code: GS03.TEMP.9

Color option
Type A Type B



Tea Set Tray

- Tailor made
- MDF board is mounted with high-grade customized waterproof PU leather.
- Type A light color
- Size: InteTray (380x250x30mm)
Tea bag box (160x80x60mm)

Product code: GS03.TEMP.10



Color option
Type A Type B

Hospitality Tray

- Tailor made
 - MDF board is mounted with high-grade customized waterproof PU leather.
 - Color: Type A light color
 - Size: 400 x 300 x H55 mm
- Product code: GS01.1.1.00017



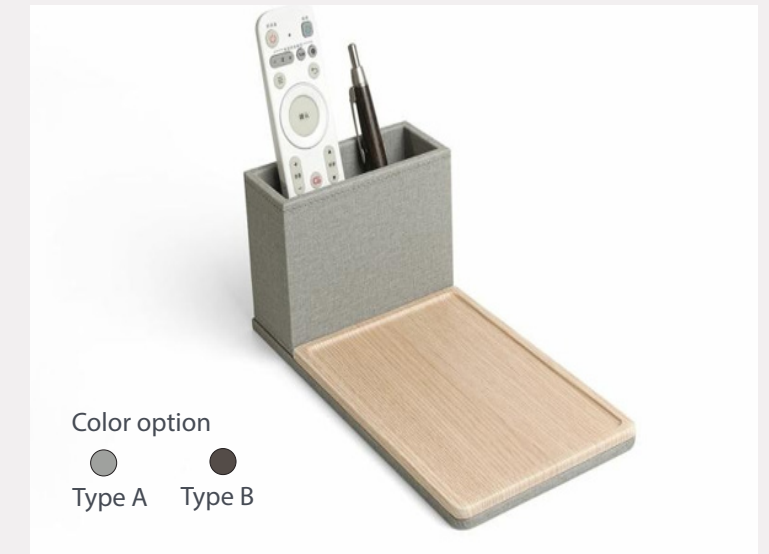
Hospitality Tray

- Tailor made
 - MDF board is mounted with high-grade customized waterproof PU leather.
 - Color: Type B brown
 - Size: 400 x 300 x H55 mm
- Product code: GS03.TEMP.30



Memo pack folder with pen

- Tailor made
 - Note & Memo pack folder.
 - MDF board is mounted with high-grade customized waterproof PU leather.
 - Color: Type A light color
 - Size: 125x245x90mm
- Product code: GS03.TEMP.13



Menu Folder

- Tailor made
 - Service guide A
 - Solid wood
 - PU leather material
 - Color: Type A light color
 - Size: 240x320x45mm
- Product code: GS03.TEMP.12



Color option
Type A Type B

Menu Folder

- Tailor made
 - Wine folder
 - MDF board is mounted with high-grade customized waterproof PU leather.
 - Color: Type B brown
 - Size: 120x240x25mm
- Product code: GS03.TEMP.11



Color option
Type A Type B

Memo pack folder with pen

- MDF board with high-grade customized waterproof PU leather.
 - Color: Type B brown
 - Size: 130x180mm
- Product code: GS03.TEMP.14



Color option
Type A Type B

Coaster

- Tailor made
- Material : PU leather (waterproof)
- Size: ϕ 90mm, H 3mm

Product code: GS03.TEMP.15



Luggage Rack

Model No.: J-13 B

- Mirror steel luggage rack
- Holds up to 50kg

Available:

Size: 600 x 470 x 660 cm

Product code: GS03.TEMP.16



Laundry Bag

- Non-woven laundry bag
- Black with one colour print
- 41x54cm

Product code: GS03.TEMP.17

Color option

- ☐ white ☒ Black ☐ Dark gray ☐ Natural



Shoe Bag

- Non-woven shoe bag
- Black with one colour print
- 28.5x36cm

Product code: GS03.TEMP.18

Color option

- ☐ white ☒ Black ☐ Dark gray ☐ Natural



Hair Dryer Bag

- Cotton material, with draw string on both sides
- 1C black printing
- Color: natural hemp color
- Size: 270x300 mm

Product code: GS01.1.1.00006

Color option

- ☒ Natural ☐ Black ☐ Dark gray ☐ Warm gray ☐ Brown

Newspaper Bag

- Non-woven newspaper bag
- Black with one colour print
- 29x39cm

Product code: GS03.TEMP.19

Color option

- ☐ white ☒ Black ☐ Dark gray ☐ Natural



Amenity tray

- Tailor made
- Color: Light
- Material: PU Leather (waterproof)

Available in:

Item box (230x130x75mm)

Soap dish (100x100x25mm)

Tray (320x250x25mm)

Product code: GS01.1.1.00020



Tissue box

- Tailor made
- Color: Light
- The bottom surface is covered with polycrystalline diamond compact fabric, and the four sides are pasted with high-grade customized waterproof marble PU leather.

Available in:

130x130x150mm

Product code: GS01.1.1.00001



Soap dish

- Tailor made
- Color: Light
- The bottom surface is covered with polycrystalline diamond compact fabric.

Available in:

100x100x25mm

Product code: GS01.1.1.00002





CHILDREN'S PRODUCTS

06

Kid's Slipper



- Cutting velvet fabric
- 5mm water ripple sole, sealed at the front
- Not washable
- Color: white

Available in:

Size: 16cm

Size: 20cm

Product code: GS03.TEMP.2

Kid's Toothbrush



- Kid's dental kit
- Rabbit toothbrush in pp bag
- 5g children's toothpaste
- Packed in paper box

Product code: QT.TBKID

Product code: QT.TBKID01

Kid's Amenity Set



- Brand Features: Created in 2005 by Marike Fichardt, a mum who wanted nothing but nature for her new born daughter. Images created by children's book illustrator John Butler, inspired by Marike's love for her homeland, South Africa. Current hotels buying include Hilton Group, Four Seasons Hotels, The Dorchester London, Corinthia London.

- Size: 50ml shampoo
50ml body wash
50ml body lotion

Product code: BR.WOC

Kids Cartoon Slippers



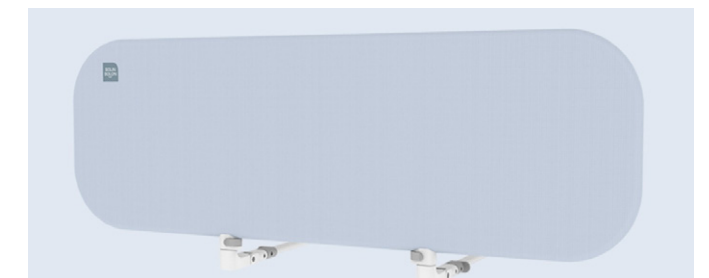
- Cover is made of plush fabric, and the foreign country is filled with PP cotton
- Cover : Pearl cotton
- TPR non-slip bottom
- Color: Black & white
- Size: 16cm/Size: 20cm
- Product code: GS01.3.6.00041



Baby bed rails

- Brand: BOLIN BOLIN
- Material: Poplar multi-layer board, beech veneer
- Age: 3+
- Warranty: 1 year
- Certification
- Size: 0.8m*1.6m or 1.2m*2m
- Gross weight: 43KG

Product code: GS01.1.5.00004
GS01.1.5.00005



color



Blue



Gray

Baby Changing Table

- Suitable for children aged 0-12 months
- High-frequency diaper changing and body care
- Singapore Good Design Award "Sgmark"
- Color: white + wood color
- Warranty: 1 year

Product code: GS01.1.5.00006



ECO
COLLECTION

07

Go Green

Eco-friendly Cup

- Material: cornstarch
- No odor, not easy to mold
- Easy to clean
- Thickened and fall resistant
- Capacity: 300 ml

Product code: GS03.TEMP.27



Eco-friendly Cutlery

- Material: cornstarch
- No odor, not easy to mold
- Easy to clean
- Thickened and fall resistant

Product code: GS03.TEMP.25



Eco-friendly Bowl & Lid

- Material: cornstarch
- No odor, not easy to mold.
- Easy to clean,
- Thickened and fall resistant
- Capacity: bowl 1000 ml + lid 500 ml
- Color: Beige color
- Size: ϕ 15x H 9.5 cm

Product code: GS03.TEMP.26



Recycled Plastic Ballpen

- Twist-action retractable ball pen made from recycled plastic
- 5 colours available
- Up to 4 colour print

Product code: GS03.TEMP.28



GOOD TO KNOW:
THE RECYCLING OF
PLASTIC TO MAKE
THESE PENS REDUCES
THE AMOUNT OF
PLASTICS ENDING
UP IN LANDFILL



Recycled Paper & Plastic trim ball pen

- Twist-action retractable ball pen made from recycled plastic
- 5 colours available
- Up to 4 colour print

Product code: GS03.TEMP.24



Disposable bamboo cutlery set

- Material: bamboo
- Set composed of 1 spoon, 1 knife, 1 fork, 1 pair of chopsticks, 1 tissue
- Packaging: kraft paper bag

Product code: GS03.TEMP.39



Material option:



Bamboo



Wooden

Coaster

- Tailor made
- Round, disposable absorbent paper cup pad
- 3 layers of absorbent paper add 1 layer of double adhesive paper.
- Size: DIA 90 mm

Product code: GS03.TEMP.26



Cup lid

- Tailor made
- Special food paper
- Four layers of paper add one layer of wax paper
- Color: White
- Size: DIA 65 mm

Product code: GS03.TEMP.26



Paper straw

- Eco-Friendly straws made in paper material
- 100% biodegradable.

Product code: GS03.TEMP.40



Color option

Black Natural White Multicolour



Eco Cotton Slippers

- Close Toe without Logo,305mm
- Outter bridge: Cotton Fabric +150g Cotton
- Sole: Sugar cane +600g paper card
- Color: Nature
- Packing: 1 pair/kraft paper band,100 pair/carton



Eco Cotton Slippers

- Close Toe without Logo,305mm
- Outter bridge: Beauty cloth+3mm 18D Sponge
- Inner bridge :non-woven fabric
- Sole: 5mm IXPE
- Color: Nature
- Packing: 1 pair/kraft paper band100 pair/carton



Eco Slippers

- Close Toe without Logo,305mm
- Outter bridge: Cotton Fabric +150g Cotton
- Sole: Sugar cane +600g paper card
- Color: White
- Packing: 1 pair/kraft paper band100pair/carton



Eco Slippers

- Close Toe without Logo, 305mm
- Outter bridge: Beauty cloth+3mm 18D Sponge
- Inner bridge :non-woven fabric
- Sole: 5mm IXPE
- Color: White
- Packing: 1 pair/kraft paper band100pair/carton



Automated slippers

- White cotton cloth
- Sole: 4mm felt cloth with plastic bottom
- Soft and comfortable
- Open toe-pure color
- Size: 28.5cm

Product code: GS01.3.6.00043



Automated slippers

- White/ Black cotton cloth
- Sole: 4mm felt cloth with plastic bottom
- Soft and comfortable
- Open toe-pure color
- Size: 28.5cm

Product code: GS01.3.6.00044



Anti-microbiological sanitary

- Special antibacterial agent added to the inner membrane(Ultra-fresh SA-18)
- Certified by EPA (U.S. Environmental Protection Agency)
- Effective health care
- Series include dental kits, combs, shaving kits, shower caps

Product code: GS01.3.6.00030 - GS01.3.6.00035



PLA packaging

- Customized
- The outer packaging is made of degradable PLA material, which can be completely degraded by microorganisms in nature after use.
- PLA series include dental kits, combs, shaving kits, shower caps
- Printing in black color

Product code: GS01.3.6.00036-GS01.3.6.00040



ECO LINE

Shaving Kit

- Shaver material: wheat straw
- Shaving cream with BDA

Product code: GS03.TEMP.45



Dental Kit

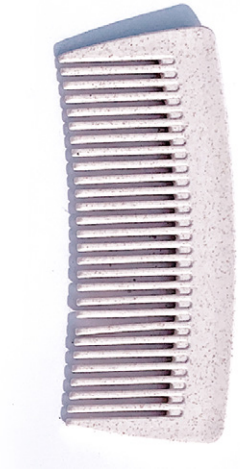
- Toothbrush material: wheat straw
- 5g whisper mint toothpaste

Product code: GS03.TEMP.46

Comb

- Material: wheat straw

Product code: GS03.TEMP.47



Vanity Kit

- 2 cotton pads
- 2 cotton buds (paper stem)
- 5cm emery board

Product code: GS03.TEMP.49



Sewing Kit

- Non-prethreaded in 'matchbook' carton

Product code: GS03.TEMP.48

Shaving Kit

- Shaver material - bamboo handle with wheat straw or metal head (2 blades)
- Shaving soap bar

Shaver product code: GS03.TEMP.51

Soap product code: GS03.TEMP.53



Material option:

● Metal head ● wheat straw



Material option:

● Metal head

Deluxe Shaving Kit

- Wooden handle with metal head (3 blades, movable head)
- Shaving soap bar

Shaver product code: GS03.TEMP.52

Soap product code: GS03.TEMP.53



Shower Cap

- Material: PLA (cornstarch material)

Product code: GS03.TEMP.50

Shower Cap

- Material: PLA (cornstarch material)

Product code: GS03.TEMP.41



Toothbrush

- Material: Bamboo + nylon bristle (white or black)

Color option



Black



White



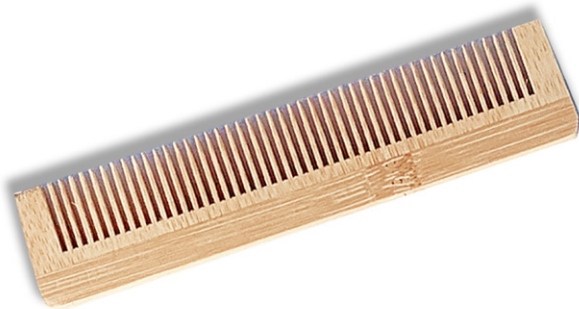
White Product code: GS03.TEMP.54

Black Product code: GS03.TEMP.55

Comb

- Material: Bamboo

Product code: GS03.TEMP.58



Hair Brush

- Material: Wooden hair brush with wooden bristles and natural rubber

Product code: GS03.TEMP.59



Toothpaste Tablets

- Toothpaste tablets packaged in a paper bag (x2) - made with natural ingredients.

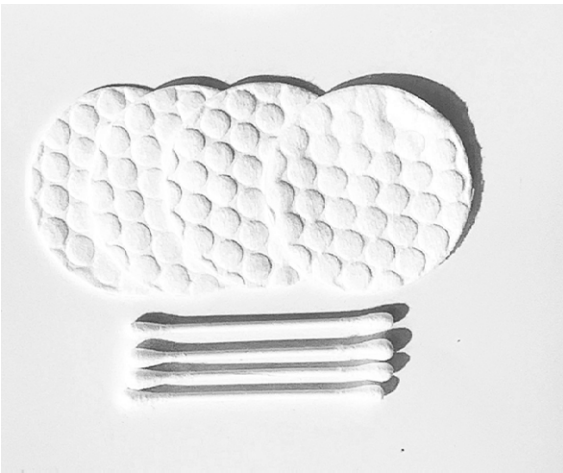
Product code: GS03.TEMP.56



Vanity Kit

- 4 cotton pads
- 4 cotton buds (paper stem)

Product code: GS03.TEMP.39



Sewing Kit

- Non-prethreaded in cardboard

Product code: GS03.TEMP.57

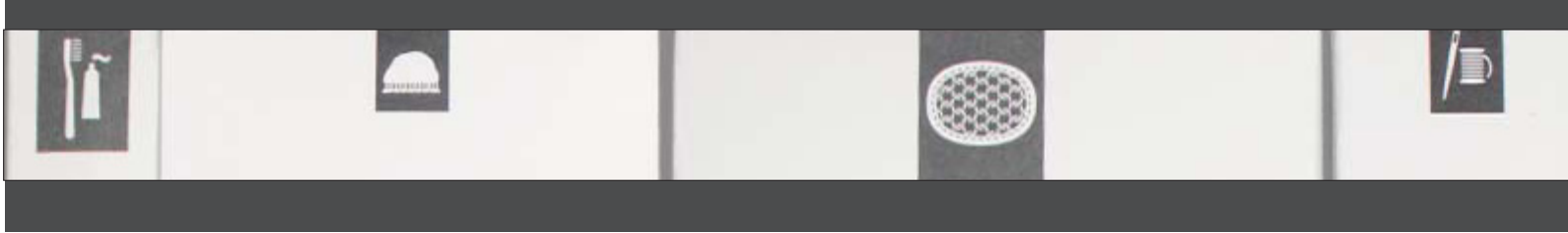


Nail Kit

- Wooden emery board
- Wooden stick

Product code: GS03.TEMP.40





Shoe Mitt

- Material: cotton

Product code: GS03.TEMP.42



Loofah

- Natural loofah

Product code: GS03.TEMP.60

FOREVER – PREMIUM LINE



Sanitary Bag

- Material: PLA (cornstarch material)

Product code: GS03.TEMP.43



Shaving Kit

- wheatstraw razor , 18ml shaving cream



Comb

- Bamboo comb



Bath Salt

- Generic bath salt
- Packaging: 30g bag, bulk or glass jar

Product code: GS03.TEMP.61



Dental Kit

- wheatstraw toothbrush
- 5g Colgate



Meding kit

- 6 needles, 6 threads in brown plastic box with a transparent cover



Shower Cap

- PLA1.8s shower



Vanity Kit

- 2 cotton pads
- 2 cotton buds
- 1 nail file



Cotton Pads

- 4 pcs cotton pads



Cotton Buds

- 4 pcs cotton buds

PPE COLLECTION

08



Antibacterial Force Wipes

- Effectively kills bacteria, viruses & fungi
- Approved by Life Fitness, Technogym, and Precor
- Does not contain alcohol, phenol, bleach, or any other harsh chemicals
- Safer than traditional cleaners, low odor, and non-irritating to skin
- Will not damage any surface found on fitness equipment, balls, stretch bands, or mats... Kills germs not your equipment!

G4 Stainless Stand

- Brand: 2XL
- The G4 Stainless Stand is an ADA compliant, sleek unit that prioritizes cleanliness by displaying wipes and storing wipe waste in an 8.5-gallon trash bin. It is composed of AISI 304 stainless steel which makes it highly resistant to rust, corrosion, dents, scratches, and extreme temperature changes. The G4 is a stylish solution for any facility including hotels, fitness centers, offices, and more.
- Extra large 8.5 gallon steel trash bin
- Diamond shaped trash cut out with rolled edges.
- Diamond shaped trash cut out with rolled edges.



Contemporary Wall Dispenser

- Brand: 2XL
- The Contemporary Wall Mount is a stylish solution to keeping "clean" a priority in all environments by making wipe access quick and easy. It can be mounted in any facility including fitness centers, hotels, warehouses, schools, and many others.
- ADA Compliant
- Touch-less Dispensing
- Self-threading design reduces maintenance.
- Unique split funnel with automatic tensioning
- To be used with 2XL refills



FULL-SPECTRUM
SOLUTIONS